



HEBO LIFT 2 MULTIPURPOSE (CRANE) BARGE

SHIP PARTICULARS

Ship Type	Multipurpose (crane) barge with assisted propulsion
Navigation notation	Unrestricted navigation, Stand alone working (without tug) 20NM
Class	Bureau Veritas: ✱ Hull · Mach, Register Holland: Estrin
Flag	Netherlands
IMO Number	9829019
Call sign	PCFA
GT	1729
LSA	12 pax, MOB boat

AUX. EQUIPMENT

Mooring	Telescopic spud legs 30 m length, 8 point anchor spread
Living/office quarters	Prepared to take up to 4 living/office quarters on deck

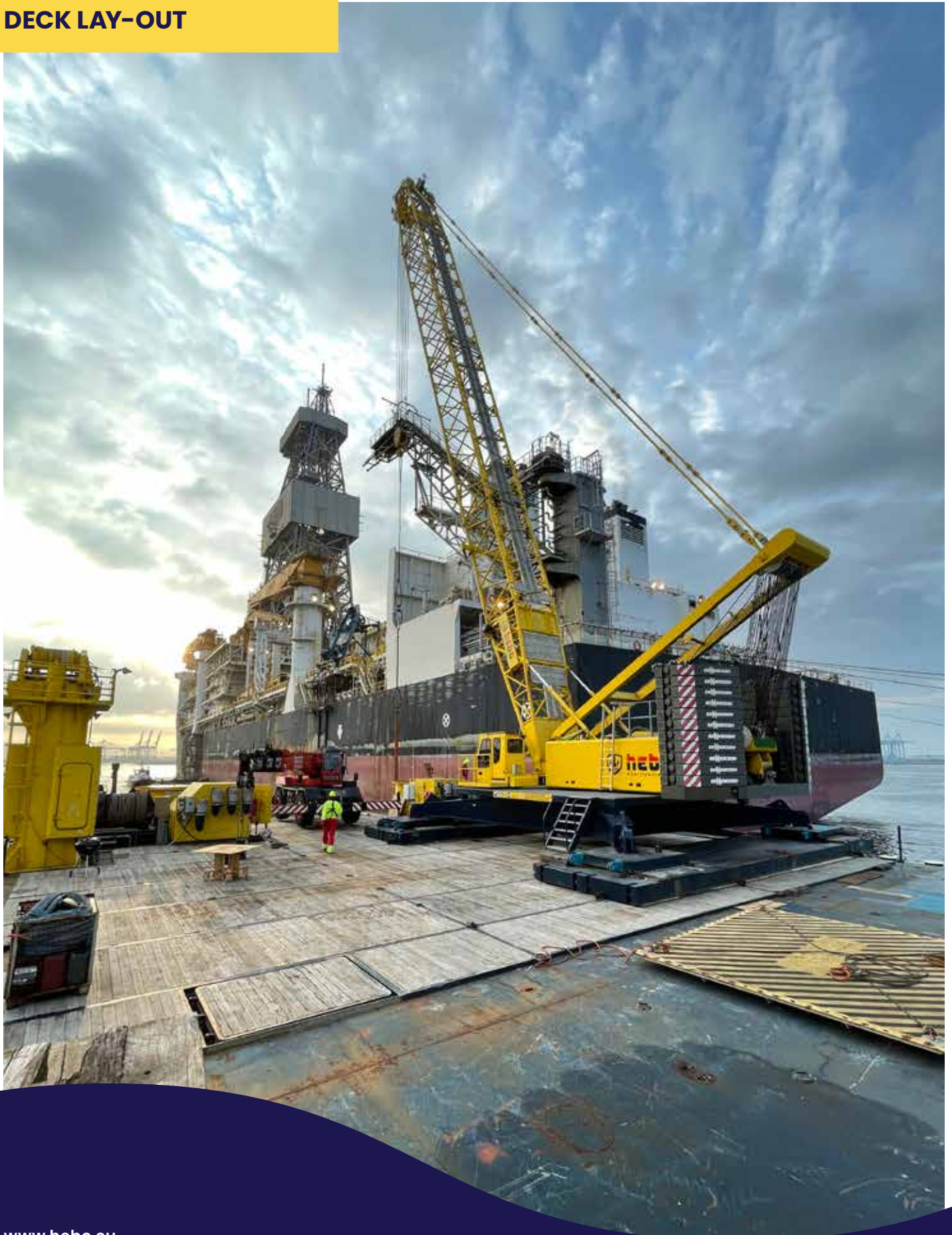
HULL PARTICULARS

Overall length	55,4 m
Breadth	23,8 m
Depth	4 m
Deck capacity	12,5 t/m ²
Free deck space	700 m ²
Builder	De Groot Marine services BV
Date of build	2016
Hull material	Steel
Hull info	Partly double hull, partly single hull 4 watertight compartments 1 continus deck

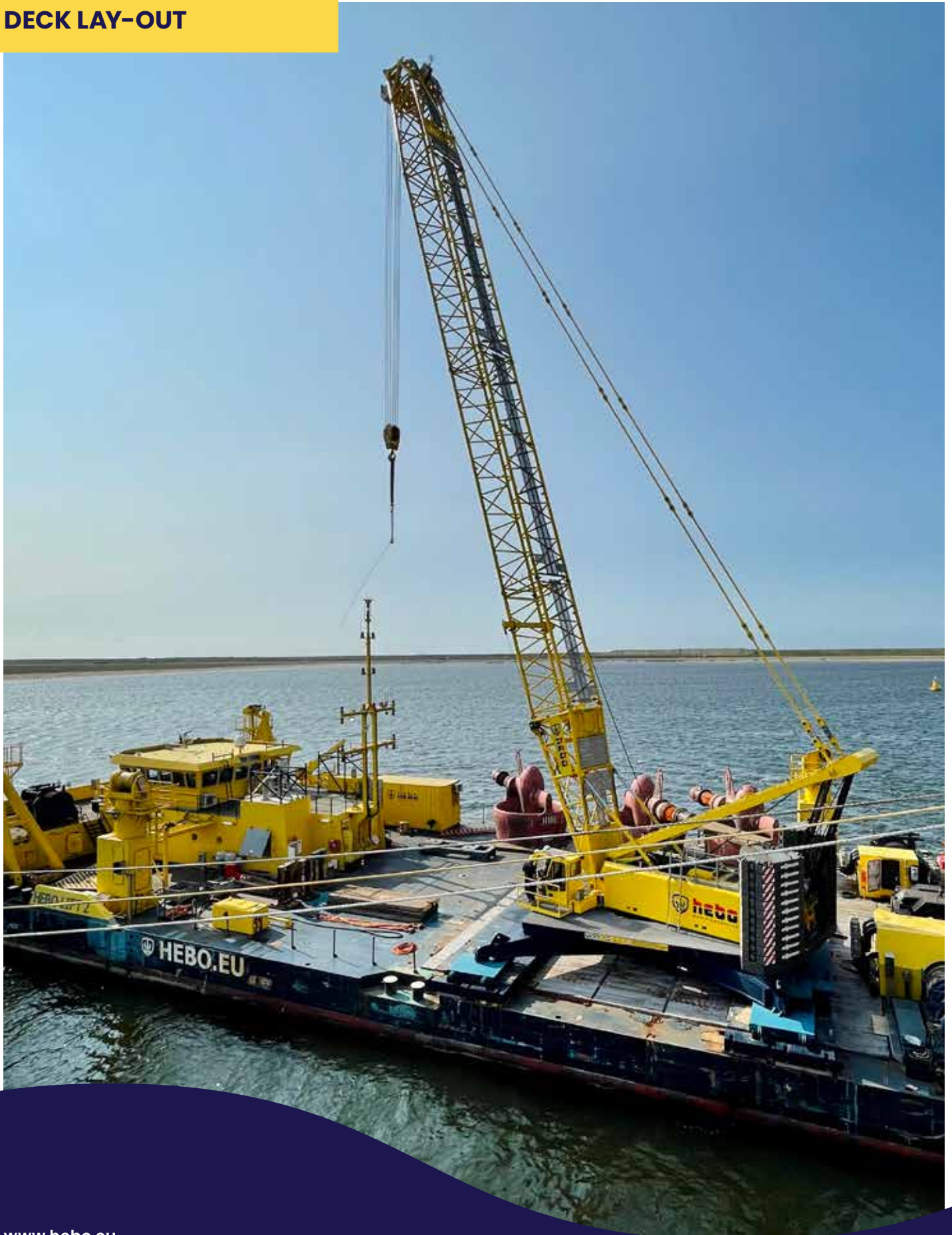
MACHINERY

Propulsion type	Electric, 1 forward thruster, 1 aft thruster
Total power	1000 kW
Speed	5 kn
Elec. installation	1 genset 230 kVA, 400V, 50 Hz, CCR II, IMO Tier 2 2 genset 665 kVA, 440V, 60 Hz, CCR II, IMO Tier 2 150 kW battery pack Frequency converter 200 kW
Alarm & monitoring	700 m ²
Ballast	De Groot Marine services BV
Navigation	2016

DECK LAY-OUT



DECK LAY-OUT



GALLEY



MESSROOM



SLEEPING CABIN, 4 IN TOTAL, 8 BUNKS



BRIDGE DECK, FORWARD VIEW



CHART TABLE, OFFICE



BRIDGE DECK AFT VIEW



BATHROOM IN ACCOMMODATION



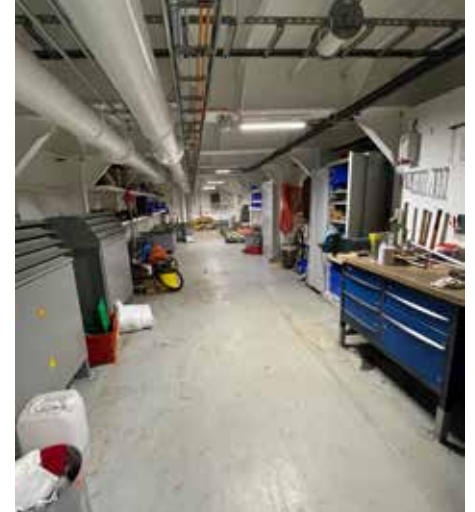
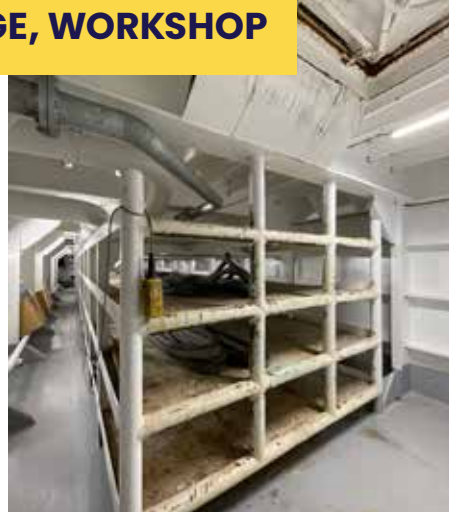
LAUNDRY-/CHANGING ROOM WITH SHOWERS AND TOILET



MACHINEROOM, GENERATORS IN SILENT PACKS



STORES, RIGGING STORAGE, WORKSHOP



E-ROOM, PUMP ROOM

