



HEBO-sub 1 HEAVY CARGO SUBMERSIBLE

Barge is equipped with (re)movable floatation towers and can operate like a floating drydock for float-in or float-off operations or used as heavy cargo barge for transportation.

MAIN DETAILS

Class	BV
Built	2009
Registry	Rotterdam, The Netherlands
Official No.	LG3773
GT	4553 T
NT	1345 T
Lightship	2640 T

TOWING ARRANGMENT

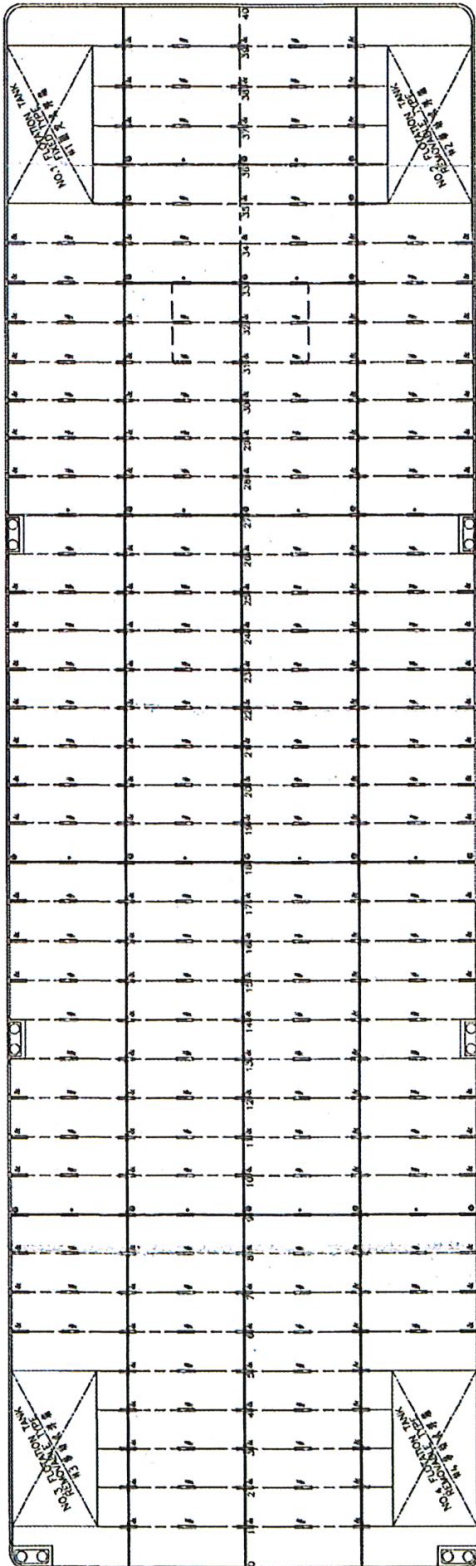
Smit brackets	3 x SWL 85 ton
Chain towing bridle	2 x 27,5 m x 64 mm
Delta plate	SWL 85 ton
Surge chain	10 m x 64 mm
Emergency towing chain	10 m x 64 mm
Emergency towing wire	80 m x 64 mm

TECHNICAL DETAILS

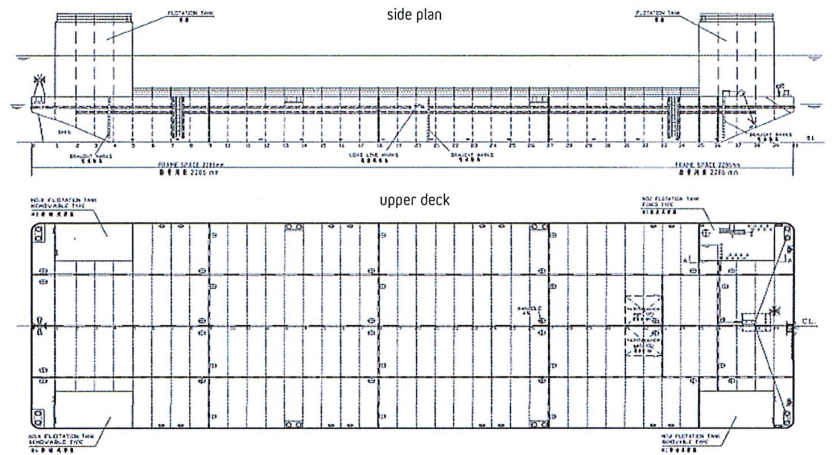
Length	91,44 m
Beam	27,43 m
Depth	6,096 m
Summer draft	4,84 m
DWT	9025 T
Deck area	2453 m ²
Frame spacing	2,286 m
Deck loading	25 t/m ²
Points loads capacity	up to 700 T
Max submerged	7 m from the deck
Draft fully submerged	13,096 m

MOORING & ANCHORING

Ballard full recessed	4 double SWL 50 T
Anchor	4000 kg
Anchor wire	610 m, diam 38 mm



ELEVATION AND PLAN



NOTE:

the mark & means 700 ton point load.
means 240 ton point load.
@ means 200 ton point load.
* means 100 ton point load.