



## HEBO-P84 FLAT TOP PONTOON

### CONSTRUCTION / CLASSIFICATION

Year of construction	2008
Classification	LR ✱ 100AN pontoon
IMO number	9492567

### REMARKS

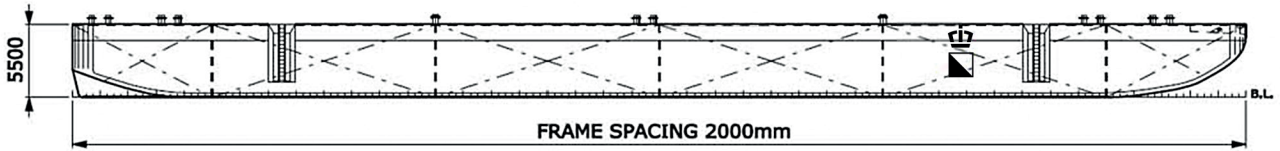
Barge can be submerged and is therefore equipped with an internal air piping system. Deballasting by aircompressor which is compulsory.

### MAX PERMISSIBLE UNIFORM LOADING

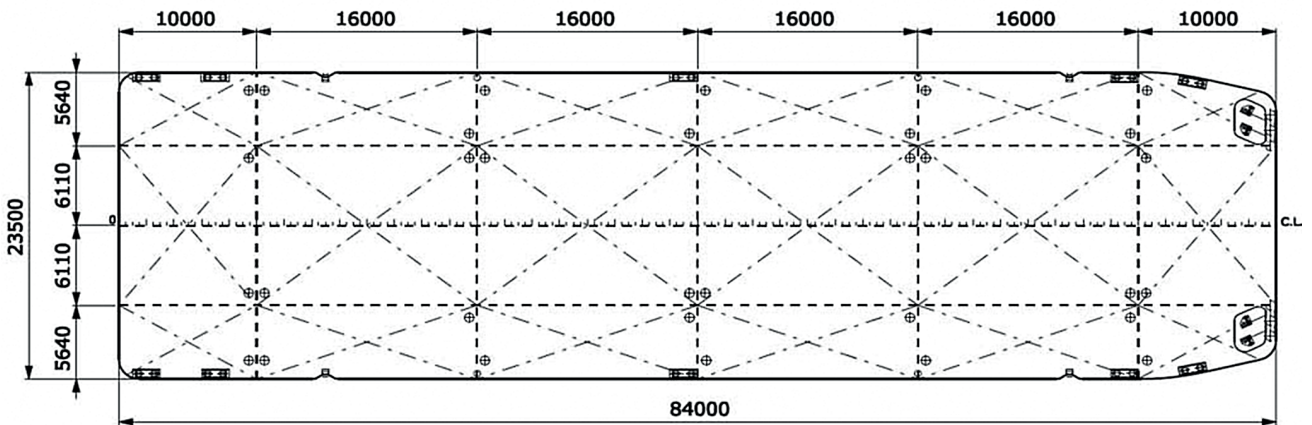
Main deck	15 t/m <sup>2</sup>
C.L. bulkhead	83 t/m <sup>2</sup>
6110 OCL bulkheads	108 t/m <sup>2</sup>
Transverse bulkheads	220 t/m <sup>2</sup>
Side frames	184 t/m <sup>2</sup>
Web frames	26,2 t/m <sup>2</sup>
Deck longitudinals	9,1 t/m <sup>2</sup>

### MAIN DATA

Gross tonnage	2,922 GT
Nett tonnage	876 t
Principal dimensions	84,00 m x 23,50 m x 5,50 m
Draught empty	0,90 m
Draught loaded	4,67 m
Lightweight	1,580 t
Max. tonnage sea	6,500 t
Max. tonnage inland	N.A.
Max. deck load	15 t/m <sup>2</sup>



SIDE VIEW



TOP VIEW DECK LEVEL

CAPACITY DIAGRAM

HEBO MARITIEMSERVICE  
Quarantaineweg 10  
3089 KP ROTTERDAM

+31 (0)10 - 216 13 13  
info@hebo.eu