



HEBO-P83 FLAT TOP PONTOON

CONSTRUCTION / CLASSIFICATION

Year of construction	2008
Classification	LR ✱ 100AN pontoon
IMO number	9492555

REMARKS

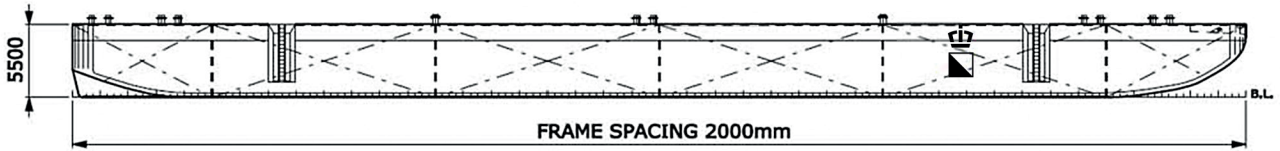
Barge can be submerged and is therefore equipped with an internal air piping system. Deballasting by aircompressor which is compulsory.

MAX PERMISSIBLE UNIFORM LOADING

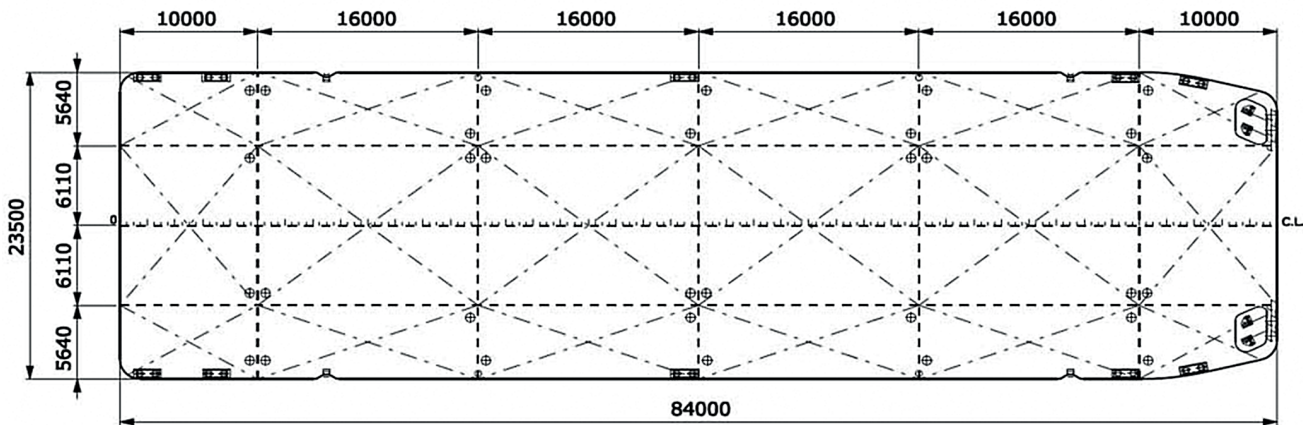
Main deck	15 t/m ²
C.L. bulkhead	83 t/m ²
6110 OCL bulkheads	108 t/m ²
Transverse bulkheads	220 t/m ²
Side frames	184 t/m ²
Web frames	26,2 t/m ²
Deck longitudinals	9,1 t/m ²

MAIN DATA

Gross tonnage	2,922 GT
Nett tonnage	876 t
Principal dimensions	84,00 m x 23,50 m x 5,50 m
Draught empty	0,90 m
Draught loaded	4,67 m
Lightweight	1,580 t
Max. tonnage sea	6,500 t
Max. tonnage inland	N.A.
Max. deck load	15 t/m ²



SIDE VIEW



TOP VIEW DECK LEVEL

CAPACITY DIAGRAM

HEBO MARITIEMSERVICE
Quarantaineweg 10
3089 KP ROTTERDAM

+31 (0)10 - 216 13 13
info@hebo.eu