

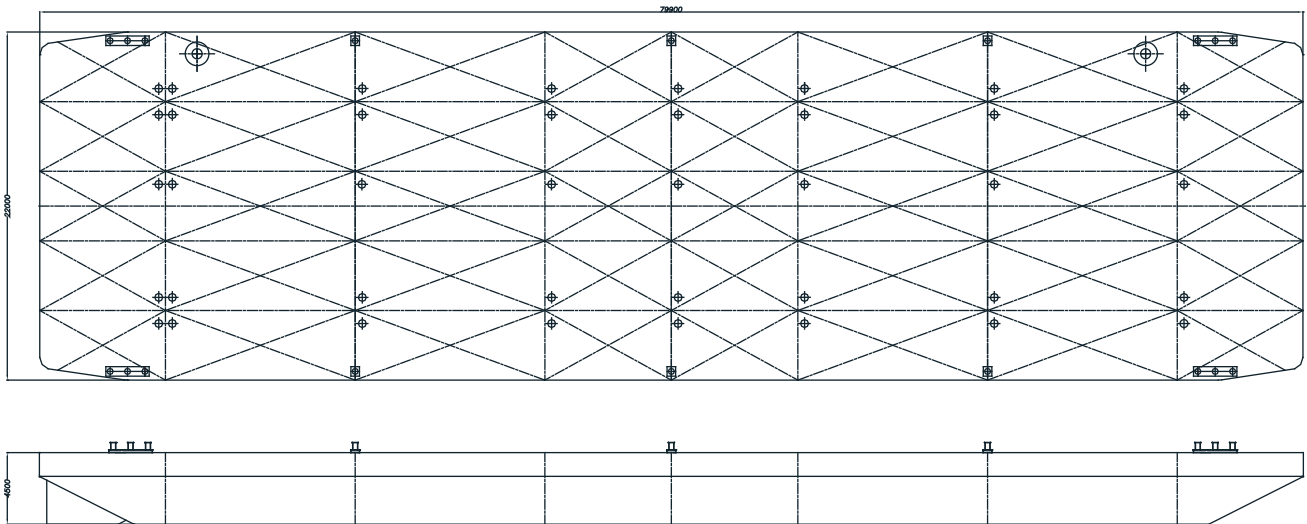
## HEBO-P80 FLAT TOP PONTOON

### CONSTRUCTION / CLASSIFICATION

Classification BV | Unrestricted navigation

### MAIN DATA

Gross tonnage	2,082 GT
Nett tonnage	624 NT
Length overall	80,0 m
Beam	22,0 m
Depth	4,5 m
Cargo capacity	4,900 t
Freeboard min.	1,05 m
Draught max.(summer)	3,45 m
Draught empty	0,59 m
Deck load max.	12 t/m <sup>2</sup>
Construction weight	901 t
Spud wells	Suitable for 2 spuds ø 914 mm



**CAPACITY DIAGRAM**