



HEBO-P72 FLAT TOP PONTOON

CONSTRUCTION / CLASSIFICATION

Year of construction	2011
Classification	LR ✱ 100AN pontoon
IMO number	9595096

MAX PERMISSIBLE UNIFORM LOADING

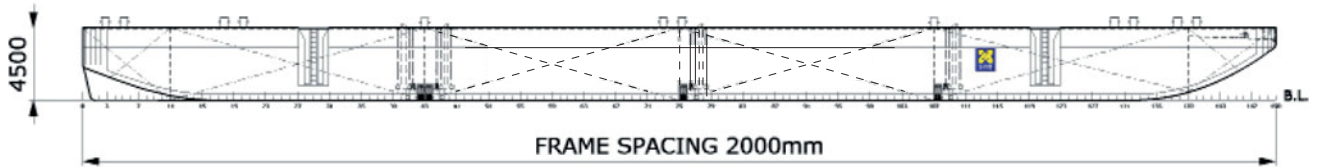
Main deck	15 t/m ²
C.L. bulkhead	80 t/m ²
6110 OCL bulkheads	100 t/m ²
Transverse bulkheads	200 t/m ²
Side shell	180 t/m ²
Web frames	23 t/m ²
Deck longitudinals	9 t/m ²

MAIN DATA

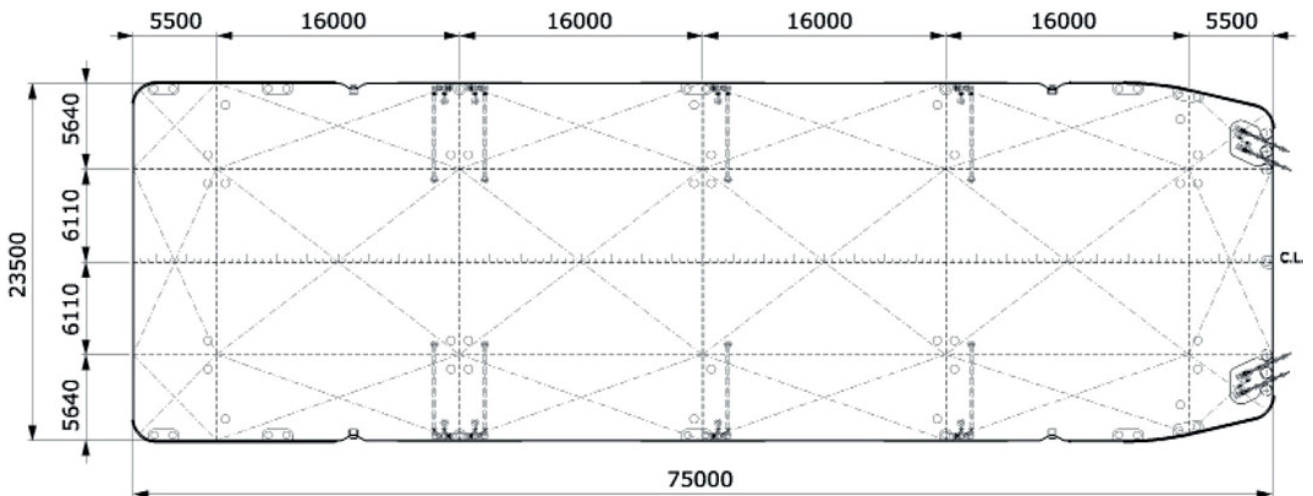
Gross tonnage	2,076 GT
Nett tonnage	622 t
Principal dimensions	75,00 m x 23,50 m x 4,50 m
Draught empty	0,73 m
Draught loaded	3,52 m
Lightweight	Approx 1,100 metric t
Max. tonnage sea	Approx 4,800 metric t
Max. deck load	15 t/m ²

MAX PERMISSIBLE CONCENTRATED LOADING: (STATIC)

On request available



SIDE VIEW



TOP VIEW DECK LEVEL

CAPACITY DIAGRAM

HEBO MARITIEMSERVICE
Quarantaineweg 10
3089 KP ROTTERDAM

+31 (0)10 - 216 13 13
info@hebo.eu