



## HEBO-P71 FLAT TOP PONTOON

### CONSTRUCTION / CLASSIFICATION

Year of construction	2010
Classification	LR ✱ 100AN pontoon
IMO number	9595084

### MAX PERMISSIBLE UNIFORM LOADING

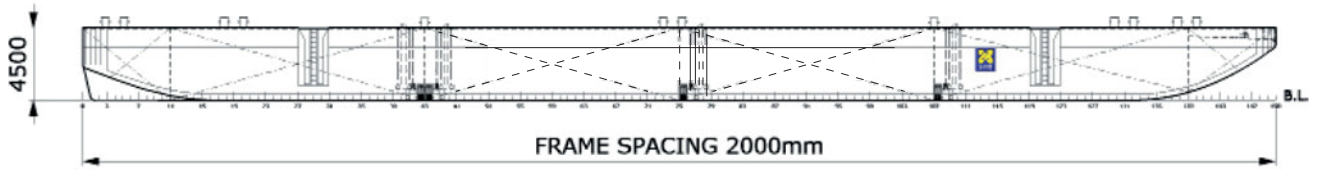
Main deck	15 t/m <sup>2</sup>
C.L. bulkhead	80 t/m <sup>2</sup>
6110 OCL bulkheads	100 t/m <sup>2</sup>
Transverse bulkheads	200 t/m <sup>2</sup>
Side shell	180 t/m <sup>2</sup>
web frames	23 t/m <sup>2</sup>
deck longitudinals	9 t/m <sup>2</sup>

### MAIN DATA

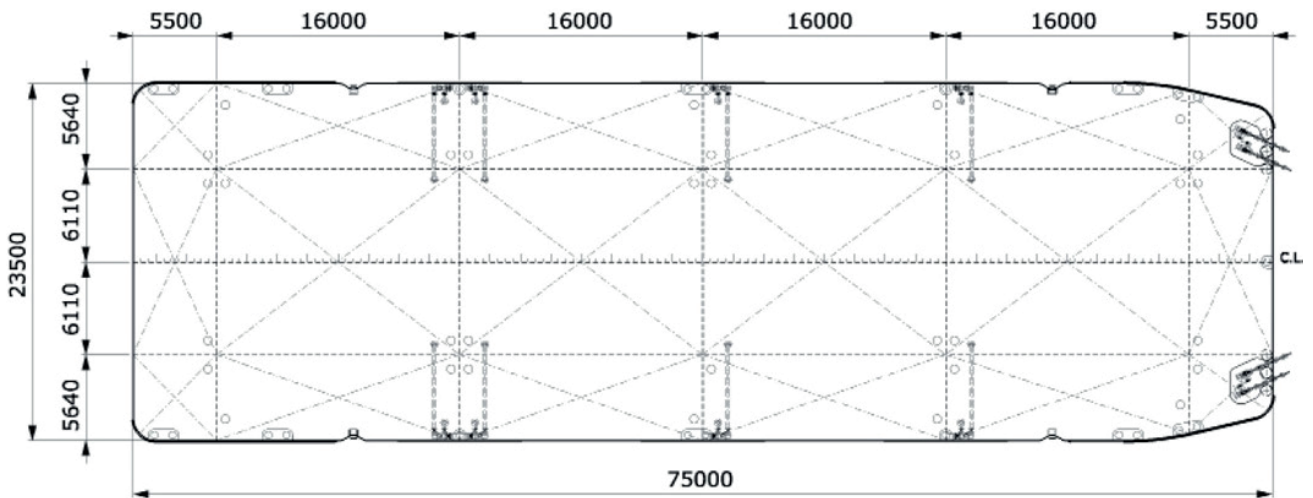
Gross tonnage	2,076 GT
Nett tonnage	622 t
Principal dimensions	75,00 m x 23,50 m x 4,50 m
Draught empty	0,73 m
Draught loaded	3,52 m
Lightweight	Approx 1,100 metric t
Max. tonnage sea	Approx 4,800 metric t
Max. deck load	15 t/m <sup>2</sup>

### MAX PERMISSIBLE CONCENTRATED LOADING: (STATIC)

On request available



SIDE VIEW



TOP VIEW DECK LEVEL

CAPACITY DIAGRAM

HEBO MARITIEMSERVICE  
Quarantaineweg 10  
3089 KP ROTTERDAM

+31 (0)10 - 216 13 13  
info@hebo.eu