

HEBO-P59 FLAT TOP PONTOON

CONSTRUCTION / CLASSIFICATION

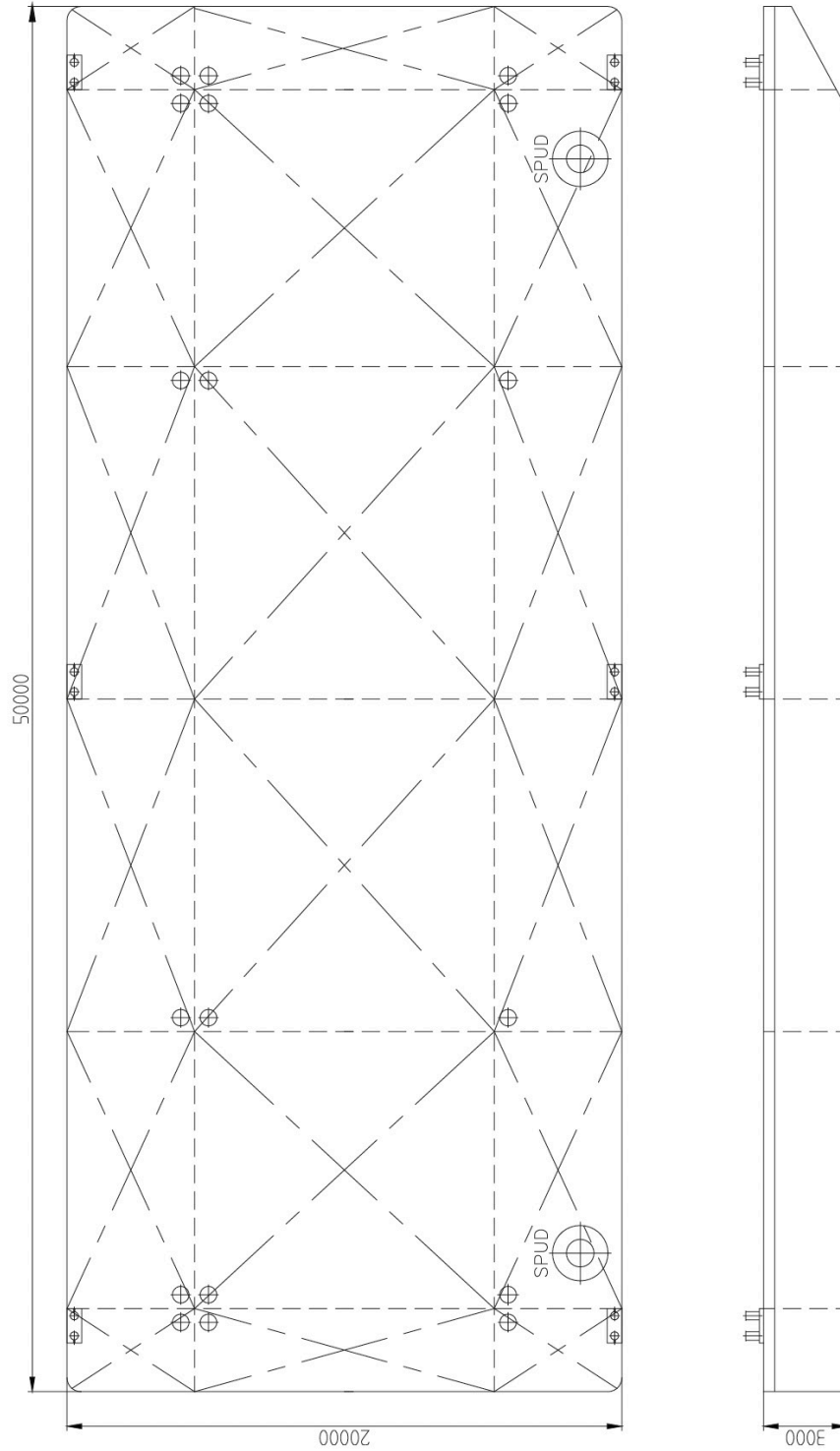
Year of construction	1999
Type of vessel	Flat top pontoon
Classification	Bureau Veritas

TRADING AREA

Unrestricted navigation

MAIN DATA

Gross tonnage	792 t
Cargo capacity	1900 t
Length	50 m
Width	20 m
Depth	3,00 m
Freeboard min.	0,65 m
Draught empty	0,43 m
Draught (maximum)	2,35 m
Deck load max.	6 t/m ²
Construction weight	400 t
Spud legs	Suitable for 2 spuds Ø609 mm



CAPACITY DIAGRAM