



Crane barge HEBO-Lift 4

Length pontoon	36.50m
Length o.a. (boom in upward position, incl. spacer pontoon)	38.60m
Length o.a. (boom 41.1m laid down, ballast set-down, excl jib)	52.50m
Breadth o.a.	17.90m
Air draught (boom laid down, ballast set-down, excl jib)	7.00m
Draught sailing (boom laid down, ballast set-down)	1.70m
Tonnage or measurement certificate number (meetbrief)	HN 3805
ENI (European Number of Identification)	02103750
Certificate (Communautair Binnenvaartcertificaat voor Binnenschepen)	SI 15176
Flag	Dutch
Propulsion	No own propulsion
Certificate for navigation on the Rhine	

Maximum capacity at 0° inclination
(minimal crane rotation allowed)

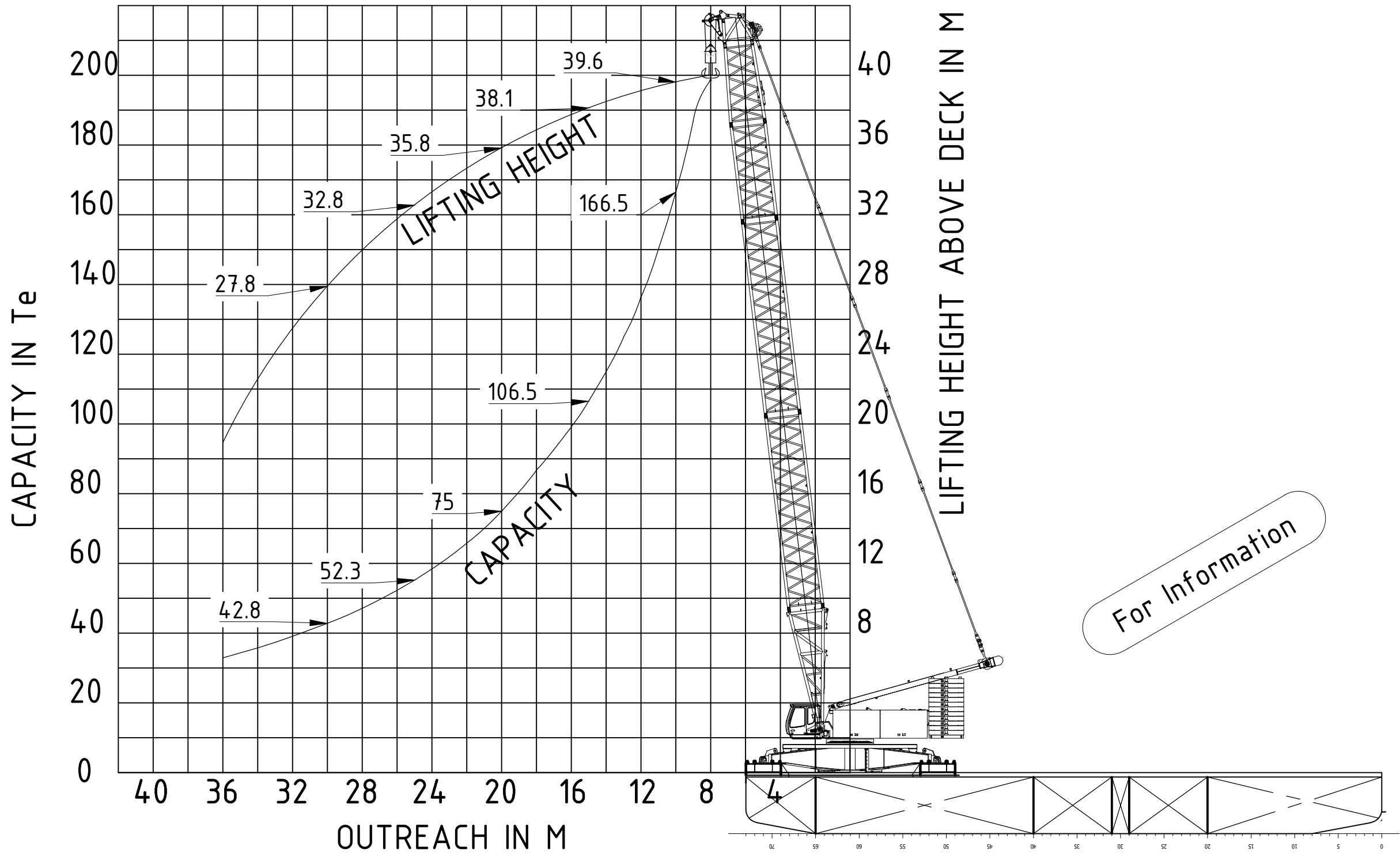
Main boom *					
Outreach in m	18.7m	24.3m	29.9m	35.5m	41.1m
8	213.2	212.7	211.9	211.3	198.6
9	190.2	189.8	189	185.5	186.8
10	171.7	171.2	170.5	169.9	166.5
11	156.3	155.8	155.1	154.5	150.0
12	143.3	142.9	142.2	140.9	136.3
13	132.3	131.8	131.1	126.7	124.8
14	122.7	122.3	121.6	118.3	115.0
15	114.0	113.7	113.2	109.4	106.5
16	104.3	104.0	103.4	101.7	99.1
17	96.0	95.7	95.1	94.6	92.6
18	88.8	88.6	88.0	87.4	86.7
19	82.5	82.3	81.2	81.2	80.5
20		76.8	76.3	75.7	75.0
22		67.6	67.1	66.5	65.8
24			59.7	59.1	58.4
26			53.6	53.0	52.3
28			48.4	47.9	47.1
30				43.5	42.8
32				39.8	39.1
34					35.8
36					32.9

- * Max load = load + rigging + hook block
- * Main hook block 300Te capacity = 4.5Te (no jib installed)
- * Auxiliary jib 42Te capacity = 1.3Te
- * Auxiliary hook block 50Te capacity = 1.8Te
- * When jib is installed, add 1.8Te (aux. hook) + 1.3Te (jib) to total hook block weight
- * Additional boom length possible upon request

Maximum capacity at 2° inclination
(360° crane rotation allowed)

Main boom *					
Outreach in m	18.7m	24.3m	29.9m	35.5m	41.1m
8	194.9	178.1	152.5	128	104.1
9	185.5	177.3	151.6	127	103.4
10	171.7	171.2	150.7	126	102.8
11	156.3	155.8	149.8	125	102.2
12	143.3	142.9	142.2	124	101.6
13	132.3	131.8	131.3	123	101
14	122.7	122.3	121.2	118.3	100.4
15	114	113.7	112.2	109.4	99.8
16	104.3	104	103.4	101.7	99.1
17	96	95.7	95.1	94.6	92.6
18	88.8	88.6	88	87.4	86.7
19	82.5	82.3	81.8	81.2	80.5
20		76.6	76.3	75.7	75
22		67.6	67.1	66.5	65.8
24			59.7	59.1	58.4
26			53.6	53	52.3
28			48.4	47.9	47.1
30				43.5	42.8
32				39.8	39.1
34					35.8
36					32.9

- * Max load = load + rigging + hook block
- * Main hook block 300Te capacity = 4.5Te (no jib installed)
- * Auxiliary jib 42Te capacity = 1.3Te
- * Auxiliary hook block 50Te capacity = 1.8Te
- * When jib is installed, add 1.8Te (aux. hook) + 1.3Te (jib) to total hook block weight
- * Additional boom length possible upon request



For Information

8 7 6 5 4 3 2 1

D

D

C

C

B

B

A

A

8 7 6 5 4 3 2 1