

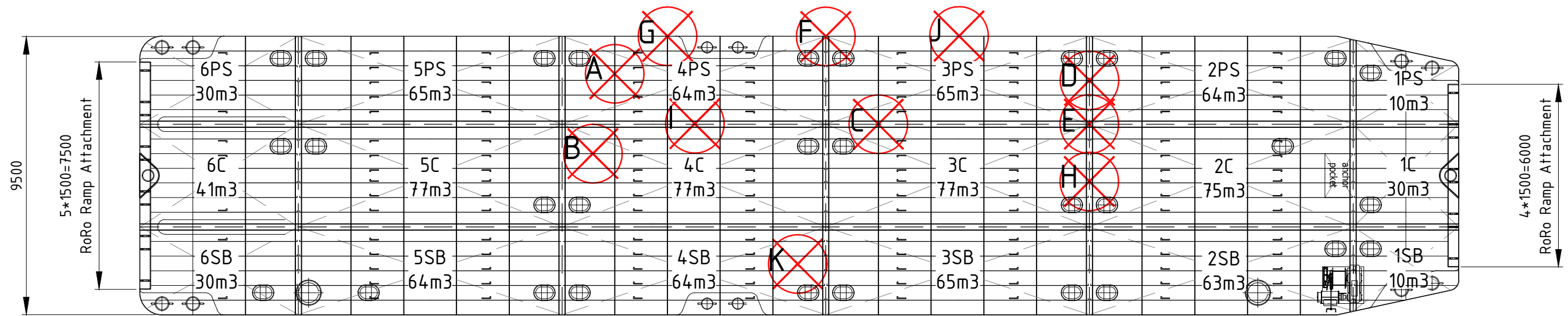


## Flat top pontoon HEBO-P34

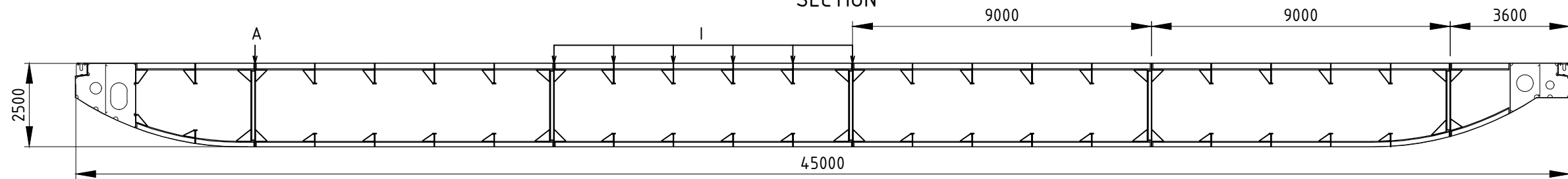
Length o.a.	45.00 m
Beam o.a.	9.50 m
Depth	2.50 m
Draught (no load)	0.40 m
Deck load	10 Te/m <sup>2</sup>
Gross tonnage	259 Te
International Tonnage Certificate	STLO-16104
ENI (European Number of Identification)	N/A
Certificate (Speciaal Certificaat voor Zeeschepen die de Rijn bevaren)	N/A
FD Number	FD 108642
Flag	Dutch
Pontoon suitable for RoRo-activities Seagoing pontoon – GL class 100 A5 Equipped with 2 spudholes	

For reference only!

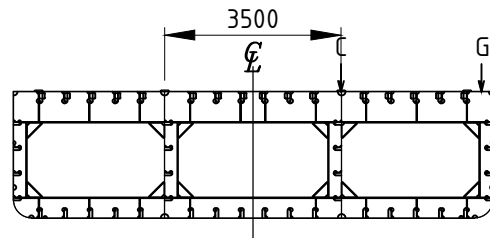
TOPVIEW LOAD SCHEME



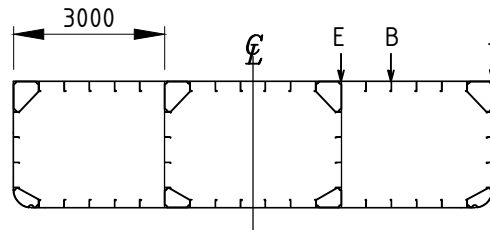
SIDEVIEW TYPICAL LONG. SECTION



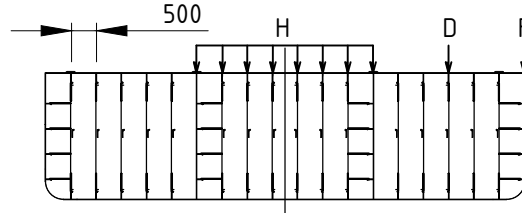
WEBFRAME



MAINFRAME



BULKHEAD



Allowable Load

I Girder	A	36T
HP Girder	B	9T
I Column Bulkhead	C	112T
HP Column Bulkhead	D	67T
CSS Bulkheads	E	103T
CSS Shell Bulkhead	F	103T
I Column Shell	G	112T
Trans. Bulkhead	H	115T/m
Long. Bulkhead	I	50T/m
Shell	J	50T/m
Deck Load	K	10T/m <sup>2</sup>

00	<b>For Information</b>	2018-10-02	BBou		
REV.	DESCRIPTION:	DATE:	DRAWN:	CHECKED:	
Without authorized signatures this document is uncontrolled, not binding and for indicative purposes only.					
CLIENT:		<b>HEBO</b>			
PROJECT:		<b>LOAD CAPACITY</b>			
TITLE:		<b>HEBO P34</b>			
		Stouweg 17-19 8064 PD Zwartsluis Tel: 0031 3838 68180 Fax: 0031 3838 68494 www.hebo.eu info@hebo.eu		Gieterijweg 31 3089 JZ Rotterdam Tel: 0031 2021 61313 www.hebo.eu info@hebo.eu	
This drawing is under the copyright of HEBO Maritiemservice BV and may not be reproduced without the company's written permission					
SCALE: 1:150	SIZE: A3	DRAWING NUMBER			
HEBO-HST:		DOC:	PART:	SHEET:	REV.
-		<b>D - G01 - 1/1</b>		<b>- 00</b>	