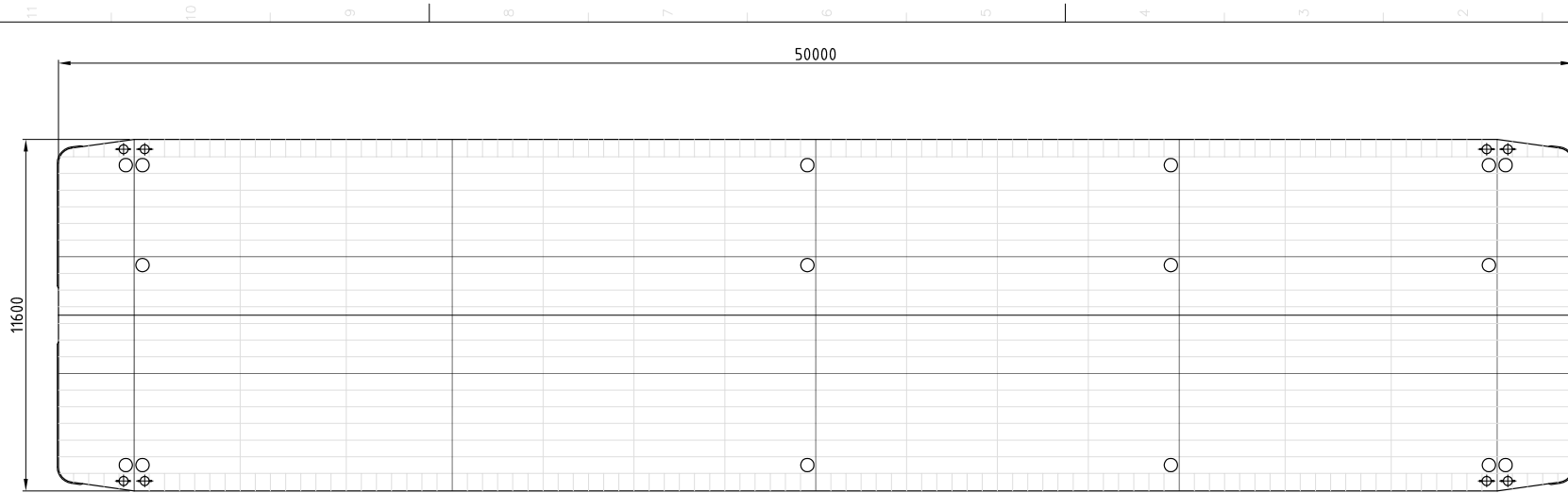




Pontoon HEBO-P33


Length o.a.	50.10m
Beam o.a.	11.64m
Depth	2.00m
Draught (no load)	0.30m
Capacity	764t
Deck load	4.98t/m ²
Gross tonnage	
Tonnage or measurement certificate number (meetbrief)	HN 3406
ENI (European Number of Identification)	02011269
Certificate (CvO)	SI 7375 R
FD Number	FD 74556
Flag	Dutch
Certificate for navigation on the Rhine	



Topview



Sideview

EQUIPMENT BOOK 2014		27-11-14	BvR
REV.	DESCRIPTION:	DATE:	DRAWN: CHECKED:
CLASS:		<i>Inland Barge</i>	
SUB GROUP:		<i>Barge HEBO</i>	
DESCRIPTION:		<i>HEBO-P33</i>	
		Stuurweg 17-19 8054 PD Zwathuis Tel: 0031 3838 66180 Fax: 0031 3838 68494 www.hebo-maritiemservice.nl info@hebo-maritiemservice.nl	Without authorized signatures this document is uncontrolled, not binding and for indicative purposes only.
This drawing is the copyright of HEBO Maritiemservice BV and may not be reproduced without the company's written permission			
SCALE: 1:100	SIZE: A3	EQUIPMENT No:	REV.



hebo
NEBU
MARITIEMSERVICE

Emergency response
Special transport
Oil spill response
VCA Petrochemie

Salvage
Heavy lift
ISO 9001/ 2008

Load (T)	Draught (M)
53.57	0.40
107.50	0.50
161.78	0.60
216.41	0.70
271.39	0.80
326.72	0.90
382.40	1.00
438.41	1.10
494.76	1.20
551.46	1.30
608.50	1.40
665.88	1.50
723.59	1.60
764.14	1.67