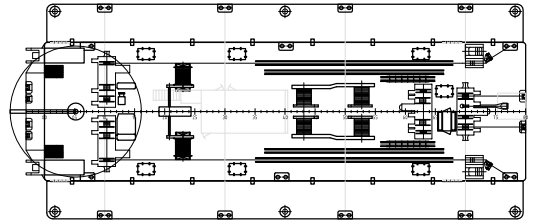
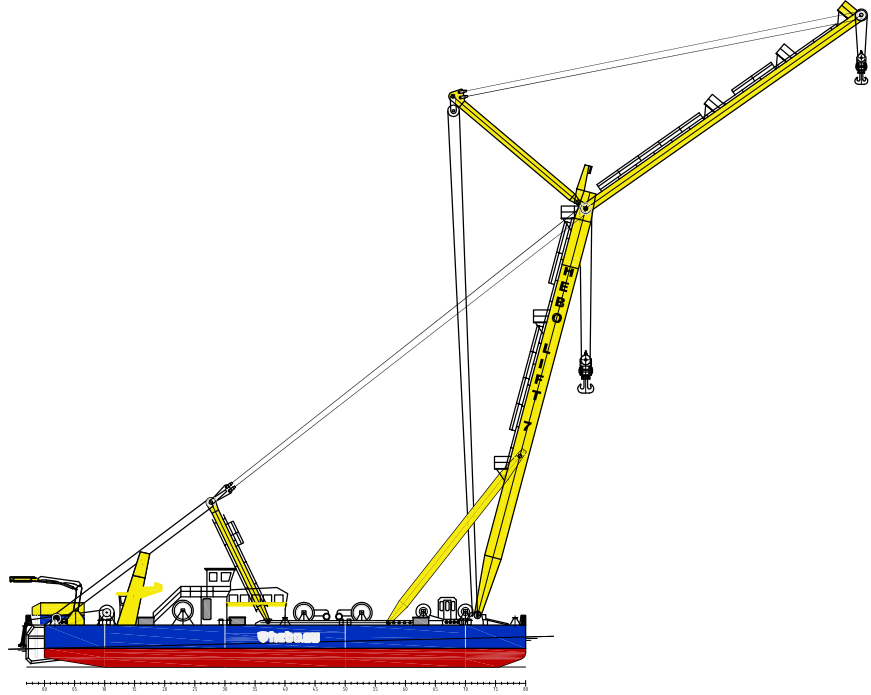
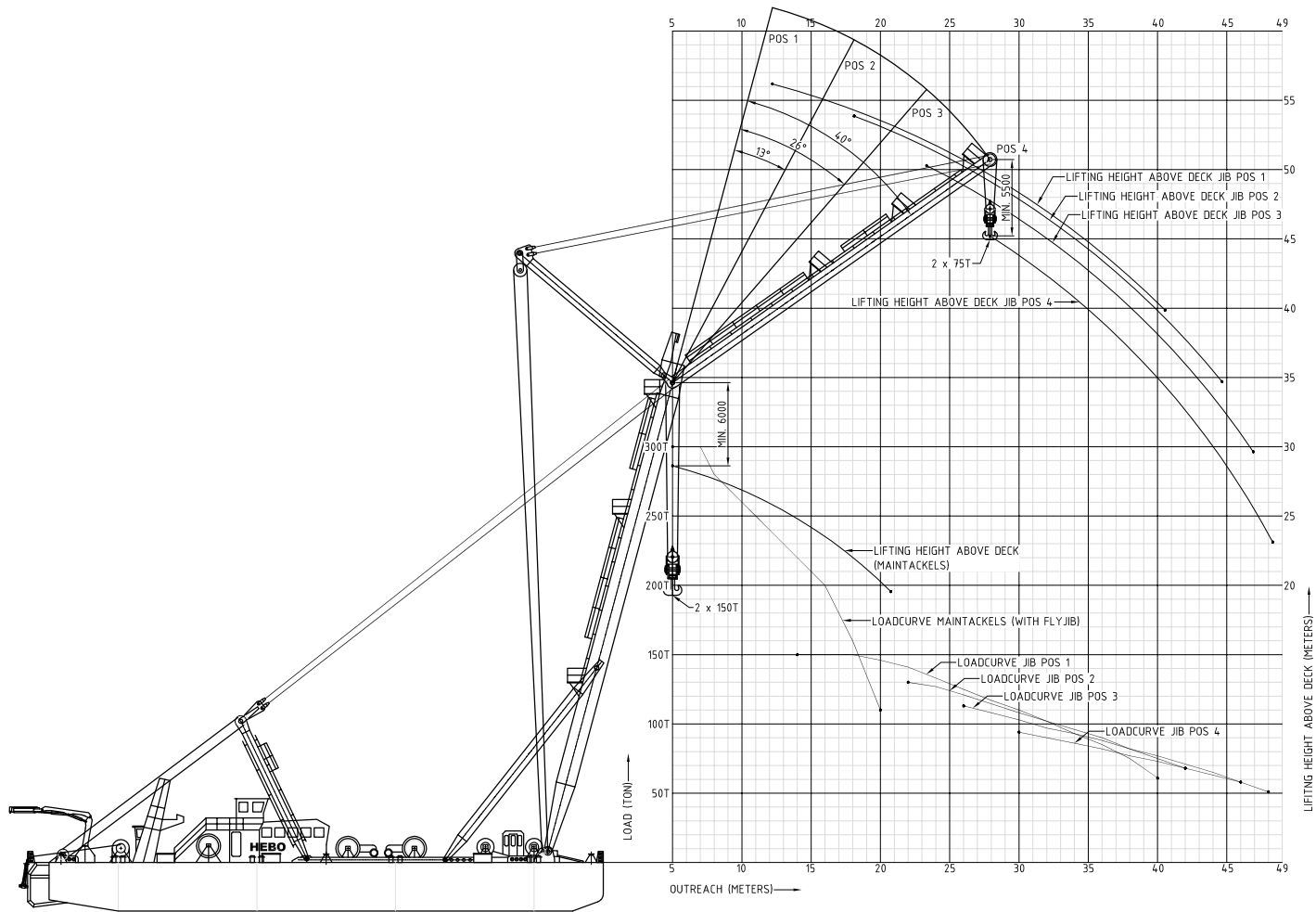




Sheerlegs HEBO-Lift 7

Length working o.a.	41.54m
Length sailing o.a. (incl. boom laid down forward on pontoon)	110.00m
Breadth working o.a. (incl. side pontoons)	17.85m
Breadth sailing o.a.	11.50m
Air draught (boom and jib laid down forward on pontoon)	6.00m
Draught sailing (incl. side pontoons)	1.50m
Draught sailing (incl. boom laid down forward on pontoon)	1.50m
Air draught (boom laid down backwards – sea passage)	17.00m
Max. capacity main hooks	2 x 150t
Max. capacity jib hooks	2 x 75t
Max. capacity main runner	3 x 5t
Max. capacity jib runner	1 x 5t
Gross tonnage	854.86t
Tonnage or measurement certificate number (meetbrief)	AN 3307
ENI (European Number of Identification)	02508680
Certificate (CvO)	SI 0652
Flag	Dutch
Propulsion	2 x 275hp SRP (Schottel Rudder Propeller)
Certificate for navigation on the Rhine	







hebo
MARITIEMSERVICE

Emergency response
Special transport
Oil spill response
VCA Petrochemie

Salvage
Heavy lift
ISO 9001/ 2008

Main boom*					
Max load in t	Outreach in m	Outreach in m	Lifting height in m	Draught in m bow	Draught in m stern
	(no jib installed)	(jib installed)	(jib installed)	(jib installed)	(jib installed)
300	5.00 – 10.00	6.80	29.00	3.08	0.86
295	11.00	7.15	28.85	3.03	0.89
290	12.00	7.40	28.70	2.99	0.91
285	12.50	7.80	28.55	2.97	0.93
280	13.00	8.15	28.40	2.93	0.95
275	13.50	8.60	28.30	2.90	0.97
270	14.00	9.05	28.15	2.85	0.99
265	14.50	9.50	28.05	2.63	1.01
260	15.00	10.05	27.90	2.80	1.03
255	15.30	10.50	27.75	2.76	1.05
250	15.60	10.95	27.60	2.73	1.07
245	16.00	11.40	27.40	2.69	1.09
240	16.20	11.85	27.20	2.66	1.10
235	16.40	12.30	27.00	2.64	1.12
230	16.70	12.75	26.80	2.61	1.13
225	17.00	13.20	26.60	2.58	1.15
220	17.20	13.75	26.40	2.55	1.16
215	17.40	14.30	26.20	2.51	1.18
210	17.70	14.60	26.00	2.49	1.20
205	18.00	15.10	25.70	2.47	1.20
200	18.20	15.55	25.40	2.45	1.20
195	18.40	15.90	25.10	2.43	1.21
190	18.70	16.30	24.90	2.41	1.21
185	19.00	16.70	24.70	2.40	1.21
180	19.20	17.05	24.40	2.37	1.22
175	19.40	17.35	24.20	2.37	1.22
170	19.70	17.65	24.00	2.35	1.22
165	20.00	17.95	23.70	2.33	1.23
160		18.15	23.50	2.32	1.23
155		18.45	23.30	2.31	1.23
150		18.65	23.10	2.28	1.23
145		18.90	23.00	2.27	1.24
140		19.05	22.80	2.25	1.24
135		19.25	22.60	2.24	1.24
130		19.40	22.50	2.22	1.24
125		19.60	22.30	2.20	1.24
120		19.80	22.20	2.19	1.24
115		19.90	22.00	2.17	1.24
110		20.05	21.90	2.16	1.24
105		20.20	21.80	2.14	1.25
100		20.30	21.70	2.13	1.25
95		20.40	21.60	2.12	1.25

* Max load = load + rigging.

For reference only.



Emergency response
Special transport
Oil spill response
VCA Petrochemie

Salvage
Heavy lift
ISO 9001/ 2008

Jib (0°)*				
Max load in t	Outreach in m	Lifting height in m	Draught in m bow	Draught in m stern
150	13.60	57.50	2.19	1.33
150	15.10	56.80	2.27	1.25
145	18.10	55.90	2.25	1.25
140	20.50	55.00	2.24	1.25
135	22.50	54.10	2.23	1.25
130	24.40	53.20	2.21	1.25
125	26.00	52.30	2.19	1.25
120	27.50	51.30	2.18	1.25
115	28.80	50.50	2.16	1.25
110	30.05	49.60	2.15	1.25
105	31.30	48.70	2.14	1.25
100	32.35	47.90	2.12	1.25
95	33.50	47.30	2.11	1.25
90	34.50	46.50	2.09	1.25
85	35.50	45.70	2.08	1.26
80	36.50	45.00	2.06	1.26
75	37.50	44.20	2.05	1.26
70	38.30	43.50	2.03	1.26
65	39.20	42.90	2.02	1.26
60	40.10	42.20	2.00	1.26

Jib (13°)*				
Max load in t	Outreach in m	Lifting height in m	Draught in m bow	Draught in m stern
130	21.70	53.90	2.35	1.13
125	24.15	53.10	2.32	1.14
120	26.34	52.10	2.29	1.16
115	28.20	51.10	2.26	1.17
110	29.85	50.10	2.23	1.19
105	31.40	49.00	2.21	1.20
100	32.82	48.00	2.18	1.21
95	34.25	46.90	2.16	1.22
90	35.55	45.80	2.14	1.23
85	36.55	44.70	2.12	1.23
80	37.80	43.60	2.09	1.24
75	38.90	42.60	2.07	1.25
70	40.00	41.50	2.05	1.26
65	41.05	40.40	2.03	1.27
60	42.05	39.40	2.01	1.27
55	43.10	38.35	1.98	1.28
50	44.10	37.30	1.95	1.29

* Max load = load + rigging.

For reference only.



Emergency response
Special transport
Oil spill response
VCA Petrochemie

Salvage
Heavy lift
ISO 9001/ 2008

Jib (26°)*				
Max load in t	Outreach in m	Lifting height in m	Draught in m bow	Draught in m stern
110	26.20	50.10	2.30	1.10
105	28.40	48.10	2.26	1.12
100	31.95	46.40	2.22	1.14
95	33.95	44.90	2.20	1.16
90	35.70	43.70	2.17	1.17
85	37.70	42.30	2.14	1.18
80	38.70	41.00	2.11	1.20
75	40.15	39.70	2.09	1.21
70	41.50	38.30	2.07	1.22
65	42.75	37.00	2.04	1.23
60	43.90	35.60	2.02	1.24
55	45.15	33.80	2.00	1.25
50	46.30	32.10	1.98	1.26

Jib (40°)*				
Max load in t	Outreach in m	Lifting height in m	Draught in m bow	Draught in m stern
100	29.60	45.50	2.33	1.05
95	33.40	42.40	2.26	1.09
90	36.10	40.00	2.22	1.12
85	38.15	38.30	2.18	1.14
80	39.80	36.70	2.14	1.16
75	41.35	35.00	2.11	1.18
70	42.70	33.60	2.08	1.19
65	43.90	32.20	2.05	1.21
60	45.15	30.50	2.04	1.22
55	46.25	28.80	2.03	1.23
50	47.35	28.00	1.98	1.25
45	48.20	25.00	1.96	1.26

* Max load = load + rigging.

For reference only.



Load lifted by main boom and jib (0°)*			
Max load in t	Outreach main boom in m	Outreach fixed jib in m	Mean outreach in m
238	5.00	12.20	8.60
235	5.30	12.50	8.90
230	5.75	13.05	9.40
225	6.20	13.70	9.95
220	6.60	14.60	10.60
215	7.10	15.30	11.20
210	7.50	16.00	11.75
205	8.00	17.10	12.55
200	8.50	18.00	13.25
195	8.95	19.05	14.00
190	9.50	20.10	14.80
185	10.00	21.20	15.60
180	10.60	21.80	16.20
175	11.10	23.30	17.20
170	11.70	24.30	18.00
165	12.25	25.35	18.80
160	12.85	26.45	19.65
155	13.40	27.40	20.40
150	13.95	28.45	21.20
145	14.45	29.35	21.90
140	15.00	30.25	22.62
135	15.45	31.15	23.30
130	15.90	31.90	23.90
125	16.30	32.70	24.50
120	16.70	33.50	25.10
115	17.10	34.10	25.60
110	17.45	34.75	26.10
105	17.80	35.60	26.70
100	18.15	36.05	27.10
95	18.50	36.70	27.60
90	18.80	37.20	28.00
85	19.10	37.80	28.45
80	19.45	38.25	28.85
75	19.70	38.90	29.30
70	20.00	39.25	29.62

* Max load = load + rigging.

* Load equally divided between main boom and jib.



hebo
MARITIEMSERVICE

Emergency response
Special transport
Oil spill response
VCA Petrochemie

Salvage
Heavy lift
ISO 9001/ 2008

Load lifted by main boom and jib (13°)*			
Max load in t	Outreach main boom in m	Outreach fixed jib in m	Mean outreach in m
198	5.00	18.30	11.65
195	5.40	18.70	12.05
190	6.00	19.40	12.07
185	6.60	20.30	13.45
180	7.20	21.20	14.20
175	7.80	22.20	15.00
170	8.40	23.30	15.85
165	9.05	24.35	16.70
160	9.70	25.30	17.50
155	10.30	26.50	18.40
150	10.55	27.65	19.30
145	10.95	28.85	19.70
140	12.20	29.90	21.05
135	12.80	31.10	21.95
130	13.40	32.20	22.80
125	13.95	33.35	23.65
120	14.55	34.45	24.50
115	15.10	35.40	25.25
110	15.65	36.35	26.00
105	16.15	37.25	26.70
100	16.65	38.05	27.35
95	17.10	38.90	28.00
90	17.60	39.60	28.60
85	18.00	40.40	29.20
80	18.45	40.95	29.70
75	18.85	41.75	30.30
70	19.25	42.35	30.80
65	19.65	42.95	31.30
60	20.00	43.45	31.72

- * Max load = load + rigging.
- * Load equally divided between main boom and jib.



Load lifted by main boom and jib (26°)*			
Max load in t	Outreach main boom in m	Outreach fixed jib in m	Mean outreach in m
166	5.00	23.65	14.32
160	6.10	24.60	15.35
155	7.00	25.40	16.20
150	8.00	26.20	17.10
145	8.95	27.05	18.00
140	9.90	28.10	19.00
135	10.80	29.40	20.10
130	11.75	31.65	21.70
125	12.65	32.15	22.40
120	13.45	33.65	23.55
115	14.25	35.15	24.70
110	15.00	36.60	25.80
105	15.65	38.15	26.90
100	16.25	39.55	27.90
95	16.85	40.75	28.80
90	17.40	41.80	29.60
85	17.90	42.90	30.40
80	18.35	43.75	31.05
75	18.80	44.50	31.65
70	19.20	45.20	32.20
65	19.60	45.80	32.70
60	20.00	46.40	33.20

Load lifted by main boom and jib (40°)*			
Max load in t	Outreach main boom in m	Outreach fixed jib in m	Mean outreach in m
138	5.00	28.00	16.50
135	5.70	28.60	17.15
130	6.75	29.85	18.30
125	7.85	31.15	19.50
120	8.95	32.55	20.75
115	10.00	34.00	22.00
110	11.05	35.55	23.30
105	12.10	37.20	24.65
100	13.05	38.75	25.90
95	14.00	40.40	27.20
90	15.00	41.80	28.40
85	15.85	43.35	29.60
80	16.70	44.50	30.60
75	17.60	45.60	31.60
70	18.40	46.60	32.50
65	19.20	47.20	33.20
60	20.00	47.90	33.95

- * Max load = load + rigging.
- * Load equally divided between main boom and jib.