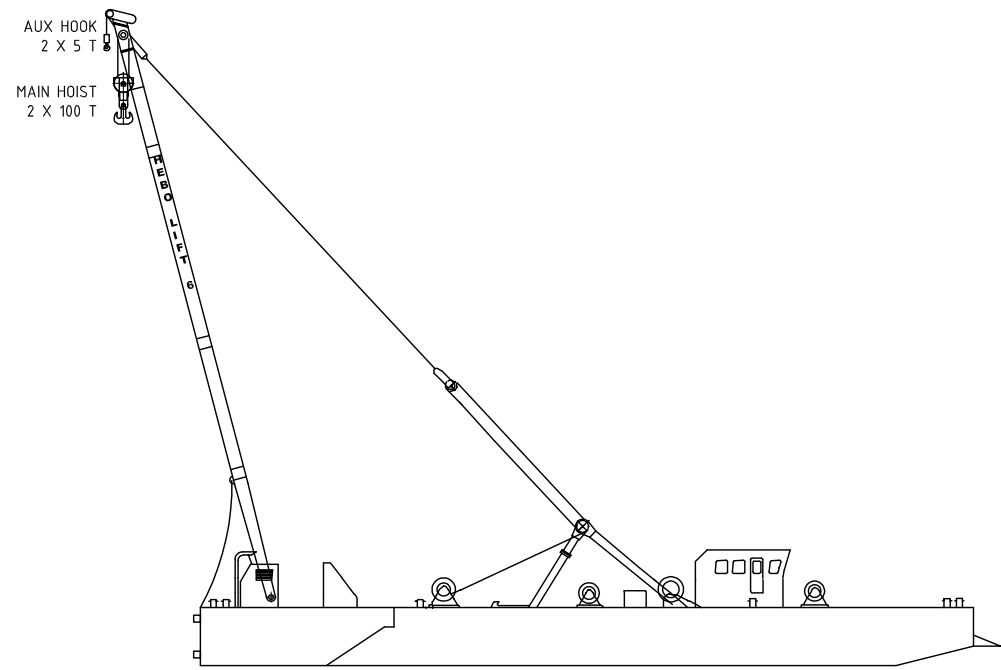
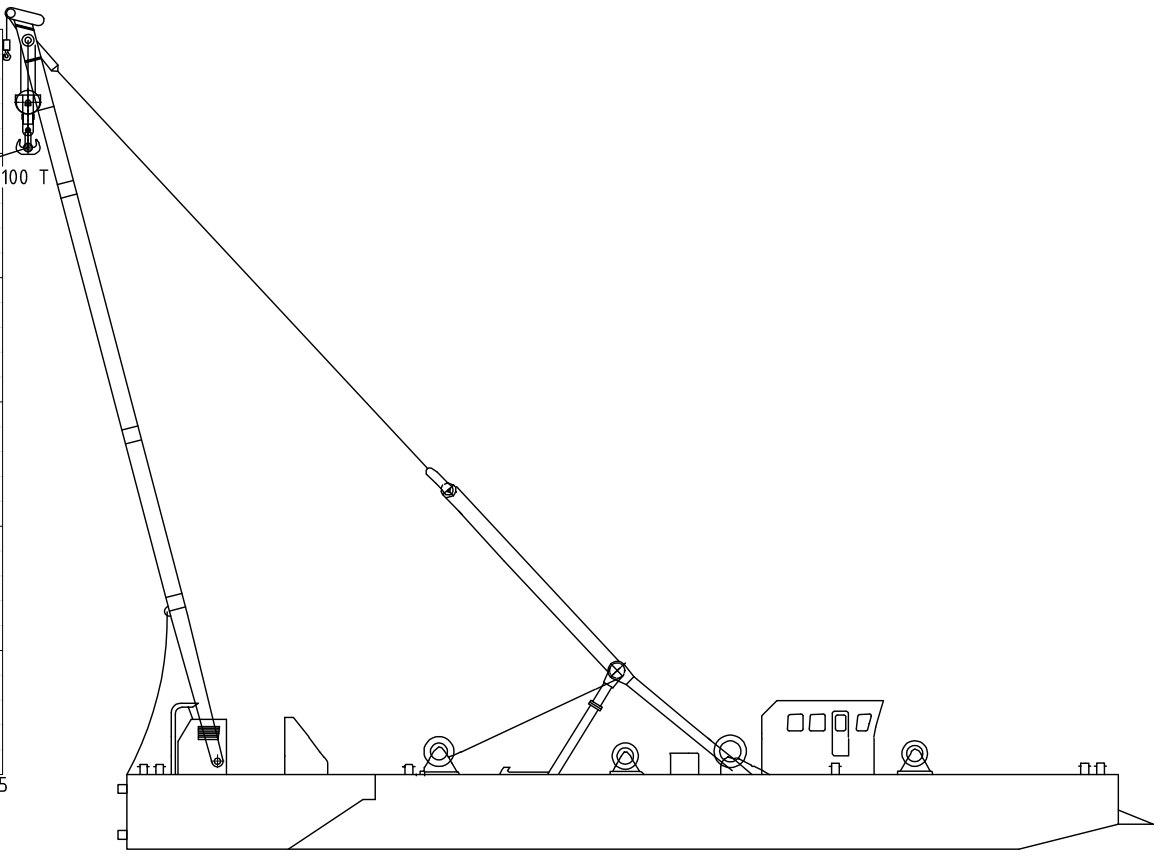
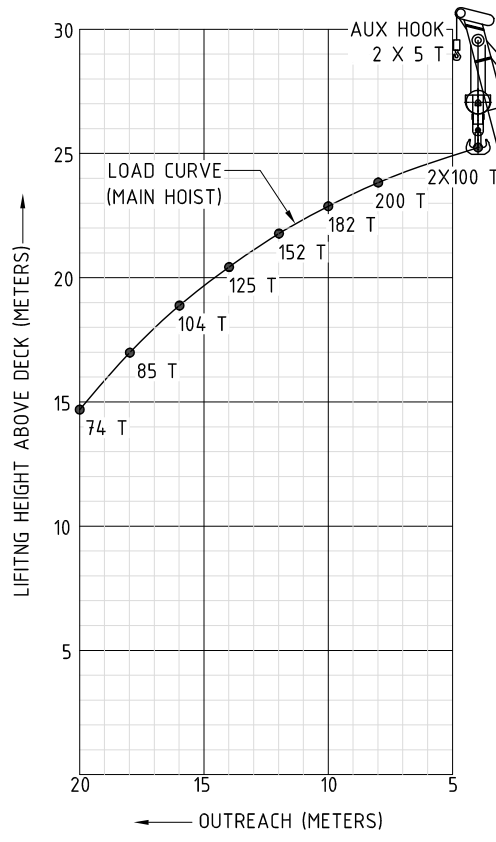




Sheerlegs HEBO-Lift 6

Length working o.a.	41.54m
Length sailing o.a. (incl. boom laid down on deck)	72.00m
Length sailing o.a. (incl. boom erected to an upright position)	51.54m
Breadth working o.a. (incl. side pontoons)	20.00m
Breadth sailing o.a.	10.68m
Air draught (incl. boom laid down backwards on deck)	4.05m
Draught sailing	1.30m
Max. capacity main hooks	2 x 100t
Max. capacity runners	2 x 5t
Gross tonnage	745t
Tonnage or measurement certificate number (meetbrief)	Not existing
ENI (European Number of Identification)	04032690
Certificate (Schiffsattest)	DU 3840
Flag	German
Propulsion	2 x 310hp SRP (Schottel Rudder Propeller)
Certificate for navigation on the Rhine Seagoing vessel – GL class 100 A5	







hebo
MARITIEMSERVICE

Emergency response
Special transport
Oil spill response
VCA Petrochemie

Salvage
Heavy lift
ISO 9001/ 2008

Main boom*		
Max load in t	Outreach in m	Lifting height in m
200	4	25.24
200	8	23.83
196	9	23.37
182	10	22.87
166	11	22.34
152	12	21.78
137	13	21.12
125	14	20.43
115	15	19.68
104	16	18.88
94	17	18.00
85	18	16.98
78	19	15.86
74	20	14.69

* Max load = load + rigging.