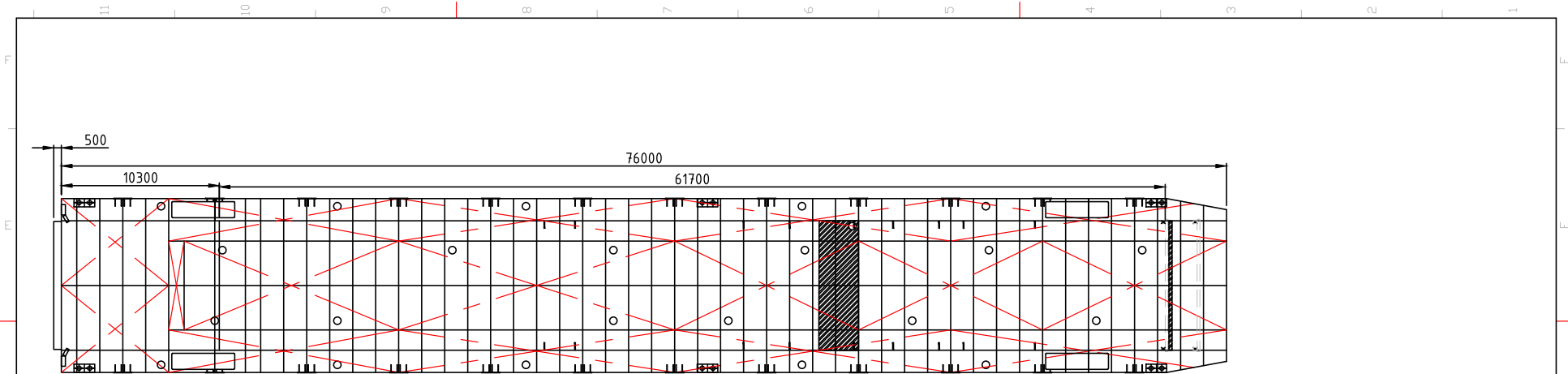


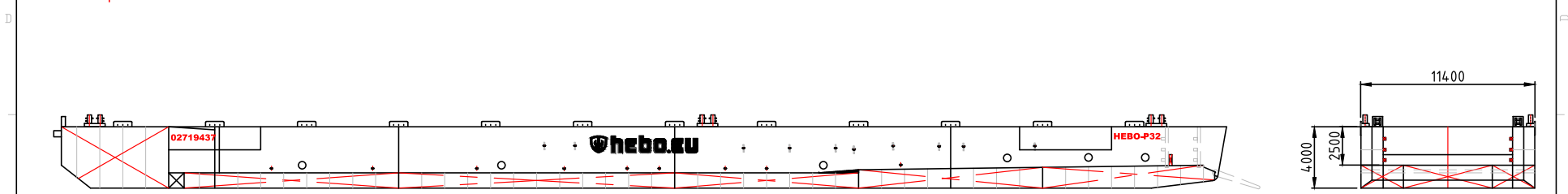


RoRo-pontoon HEBO-P32

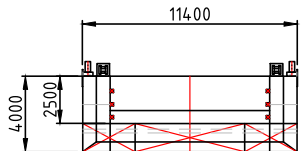
Length o.a.	76.43m
Length hold	61.70m
Beam o.a.	11.40m
Breadth hold	8.44m
Depth	4.00m
Draught (no load)	1.03m
Capacity	1782t
Deck load	
Gross tonnage	915t
Tonnage or measurement certificate number (meetbrief)	HN7433
ENI (European Number of Identification)	02719437
Certificate (CvO)	SI 10794 R
FD Number	FD 78784
Flag	Dutch
Certificate for navigation on the Rhine Pontoon suitable for RoRo-activities Drive-in pontoon	



Topview




Sideview



Frontview

Specifications	[m]	PONTOON HEBO-P32	LOAD (Te)	DRAUGHT (Mtr)
Length	[m]	76,00	84,92	1,15
			169,99	1,25
Breadth	[m]	11,40	255,19	1,35
			340,53	1,45
			425,94	1,55
Height	[m]	4,0	511,34	1,65
			596,72	1,75
Min Draught	[m]	1,05	682,06	1,85
			767,35	1,95
Max Draught	[m]	3,12	852,58	2,05
			937,79	2,15
Capacity	[Te]	1782	1022,99	2,25
			1108,19	2,35
Weight	[Te]	915,0	1193,38	2,45
			1278,59	2,55
Max Deck Load	[Te/m2]		1363,83	2,65
			1449,1	2,75
Classification		Classified for inland waters and Rhine	1534,41	2,85
			1619,74	2,95
			1705,34	3,05
			1765,44	3,12

00	EQUIPMENT BOOK 2015	20-07-2015	BvRI	
REV.	DESCRIPTION:	DATE:	DRAWN:	CHECKED:
CLASS:		INLAND		
SUB GROUP:		RORO-BARGE		
DESCRIPTION:		HEBO-P32		
	Stouwerweg 17-19 8064 PD Zwartsluis Tel: 0031 3838 68180 Fax: 0031 3838 68494 www.hebo-maritienservice.nl info@hebo-maritienservice.nl	Without authorized signatures this document is uncontrolled, not binding and for indicative purposes only.		
	This drawing is the copyright of HEBO Maritienservice BV and may not be reproduced without the company's written permission			
SCALE:	SIZE:	EQUIPMENT No:	REV.	
1:175	A3	HEBO-P32	00	

Load (T)	Draught (M)
59.45	1.10
144.47	1.20
229.63	1.30
314.93	1.40
400.32	1.50
485.72	1.60
571.11	1.70
656.46	1.80
741.76	1.90
827.01	2.00
912.25	2.10
997.47	2.20
1082.68	2.30
1167.87	2.40
1253.07	2.50
1338.30	2.60
1423.56	2.70
1508.86	2.80
1594.19	2.90
1679.70	3.00
1765.48	3.10
1782.66	3.12