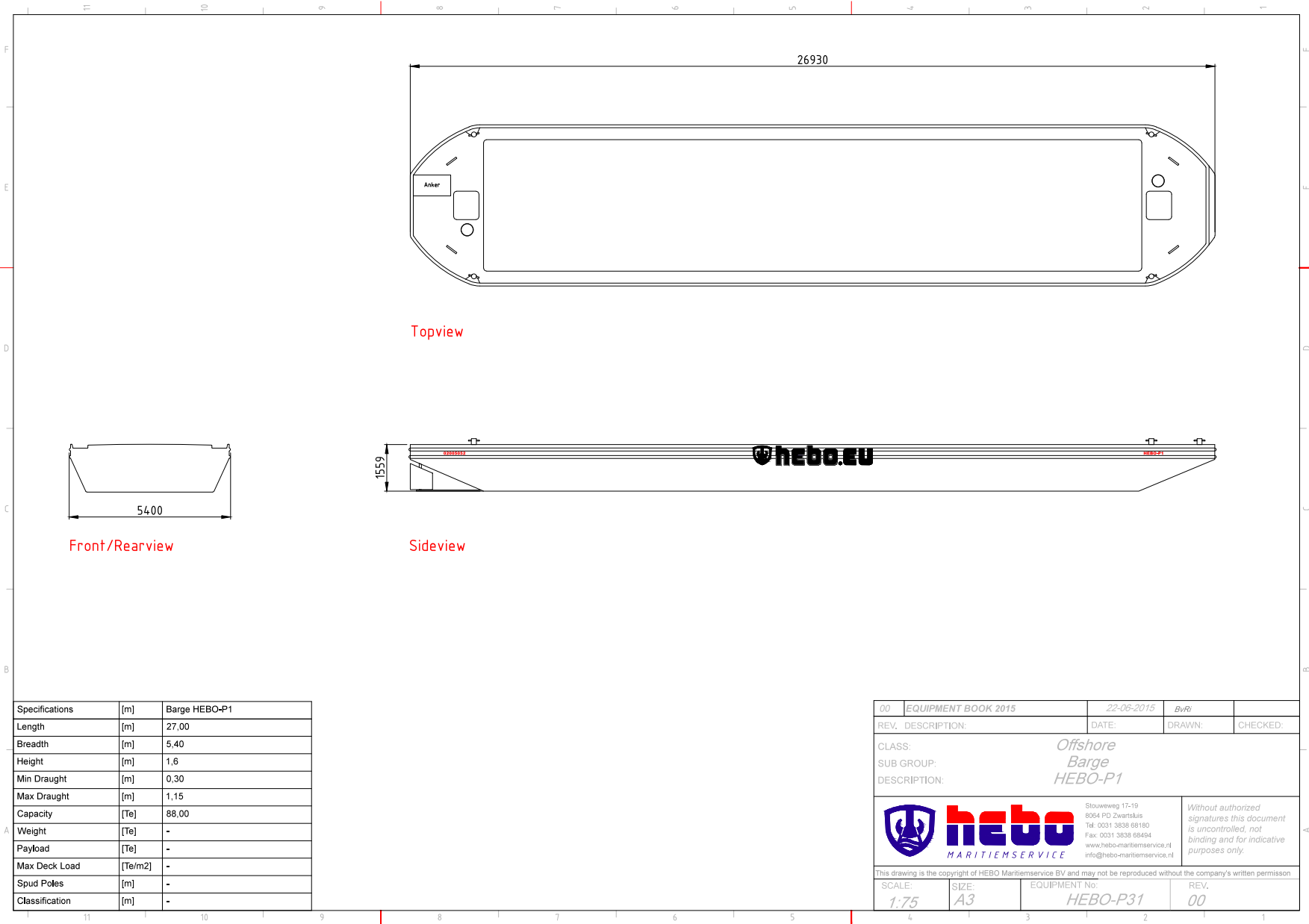



## Deck barge HEBO-P1

|   |            |
|---|------------|
| Length o.a.   | 26.93m     |
| Beam o.a.   | 5.40m      |
| Depth   | 1.60m      |
| Draught (no load)                                     | 0.39m      |
| Capacity  | 88t        |
| Deck load   |            |
| Gross tonnage   |            |
| Tonnage or measurement certificate number (meetbrief) | HN 5735    |
| ENI (European Number of Identification)               | 02005052   |
| Certificate (Communautair Binnenvaartcertificaat)     | SI 11900 C |
| Flag  | Dutch      |
| Certificate for navigation on the Rhine               |            |



| Specifications | [m]     | Barge HEBO-P1 |
|----------------|---------|---------------|
| Length         | [m]     | 27,00         |
| Breadth        | [m]     | 5,40          |
| Height         | [m]     | 1,6           |
| Min Draught    | [m]     | 0,30          |
| Max Draught    | [m]     | 1,15          |
| Capacity       | [Te]    | 88,00         |
| Weight         | [Te]    | -             |
| Payload        | [Te]    | -             |
| Max Deck Load  | [Te/m2] | -             |
| Spud Poles     | [m]     | -             |
| Classification | [m]     | -             |

|   |   |  |        |          |
|---|---|--|--------|----------|
| 00  | EQUIPMENT BOOK 2015   | 22-06-2015   | BvRi   |          |
| REV.  | DESCRIPTION:  | DATE:  | DRAWN: | CHECKED: |
| CLASS:  |   | Offshore Barge HEBO-P1   |        |          |
| SUB GROUP:  |   |  |        |          |
| DESCRIPTION:  |   |  |        |          |
| <br><b>hebo</b><br>MARITIEMSERVICE | Slouweweg 17-19<br>8054 PD Zwartslus<br>Tel: 0031 3838 68180<br>Fax: 0031 3838 68494<br>www.hebo-maritiemservice.nl<br>info@hebo-maritiemservice.nl | Without authorized signatures this document is uncontrolled, not binding and for indicative purposes only. |        |          |
|   | This drawing is the copyright of HEBO Maritiemservice BV and may not be reproduced without the company's written permission.                        |  |        |          |
| SCALE:  | SIZE:   | EQUIPMENT No:  | REV.   |          |
| 1:75  | A3  | HEBO-P31   | 00     |          |



**hebo**  
MARITIEMSERVICE

Emergency response  
Special transport  
Oil spill response  
VCA Petrochemie

Salvage  
Heavy lift  
ISO 9001/ 2008

| Load (T) | Draught (M) |
|----------|-------------|
| 11.56    | 0.50        |
| 22.48    | 0.60        |
| 33.76    | 0.70        |
| 45.40    | 0.80        |
| 57.38    | 0.90        |
| 69.70    | 1.00        |
| 82.36    | 1.10        |
| 88.80    | 1.15        |

For reference only.